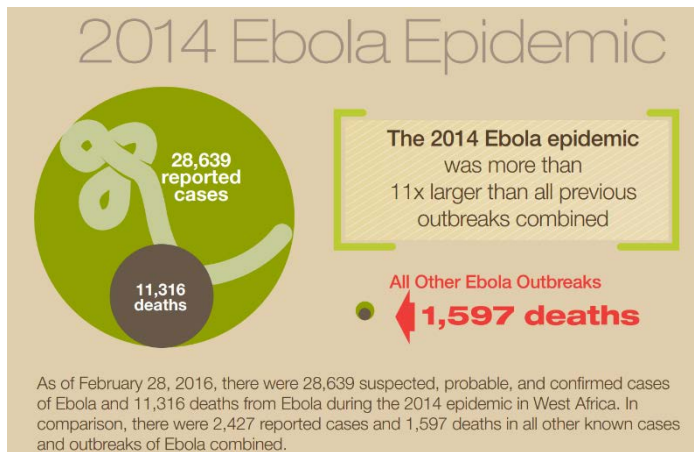


HID Dispatch

A bi-monthly newsletter to share tips, trends and best practices across the state. Stay tuned for trainings and resources.

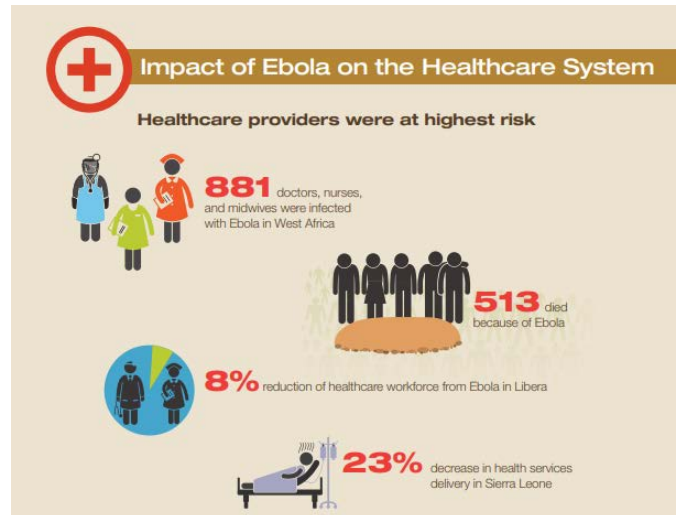
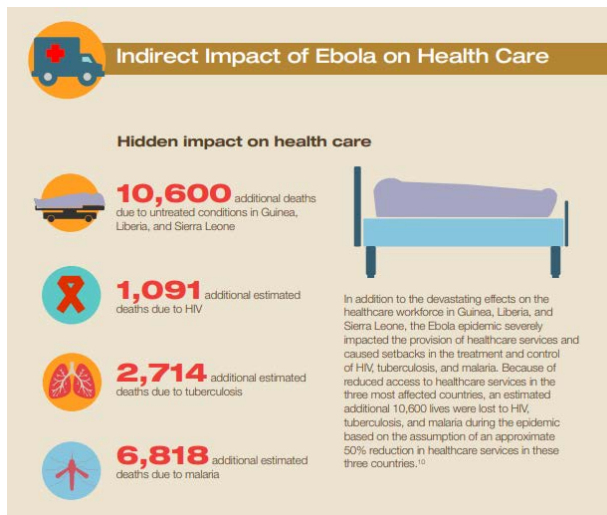
Ready or not? A look back on Ebola's harmful effect on healthcare



In 2014, the largest worldwide outbreak of Ebola in history hit, effecting eleven times more people than all previous Ebola outbreaks combined. In its devastating wake, it left children orphaned, hospitals understaffed, economies in shambles and fear in the minds of citizens worldwide. While the horrendous effects were countless, there was *one* positive ripple that did emanate from the outbreak; the awareness of how underprepared we *really* were. Thankfully, the outbreak didn't hit America like we thought it would, but to not learn a grave lesson from this near miss would be extremely foolish. In the midst of the outbreak, Carle Foundation Hospital decided not to “wait for a fire to buy a fire truck” and began working to become an Ebola Treatment Center. In 2018, Ebola may not be the highest

concern in Illinois, but the realization of how quickly viruses can spread in the 21st century is of high concern. The greatest uneasiness surrounding viruses is that they know no economic status, race, gender or age. They show no remorse, mercy or predictability. Nevertheless, when they will rear their ugly heads is all but uncertain. The only chance we have against staving off outbreaks in the future is to be prepared today.

Source: <https://www.cdc.gov/vhf/ebola/history/2014-2016-outbreak/cost-of-ebola.html>



Tidbits from Taffy: Health Screening Travel Question: To ask or not to ask?

Even though Ebola is low risk, there is value in continuing to ask relevant travel questions correlating with global outbreaks at patient check-in. Keeping current on peaks can be challenging so weekly updates and education are provided to staff based on CDC, IDPH and WHO.

Global concerns: Ebola in the Democratic Republic of Congo is decreasing. As of 6/24/18, there are 55 reported Ebola virus disease (EVD) cases and 28 deaths. Most follow-up contacts with mandatory 21-day follow-up period are complete and all mandatory monitoring were completed by 6/27/18.

Local concerns: A confirmed measles case appeared in Chicago on 6/15/18 according to IDPH. Monitor and consider measles in any patient with febrile rash illness and clinically compatible measles symptoms who has recently traveled abroad, was born after 1957, has not been vaccinated, and/or who has had contact with someone with a febrile rash illness. Immunocompromised people may not develop a rash or may exhibit an atypical rash.



Resources at:

[Centers for Disease Control](#)
[World Health Organization](#)

About the Author: Taffy Creviston, MPH, CIC, senior infection preventionist, Carle Foundation Hospital.

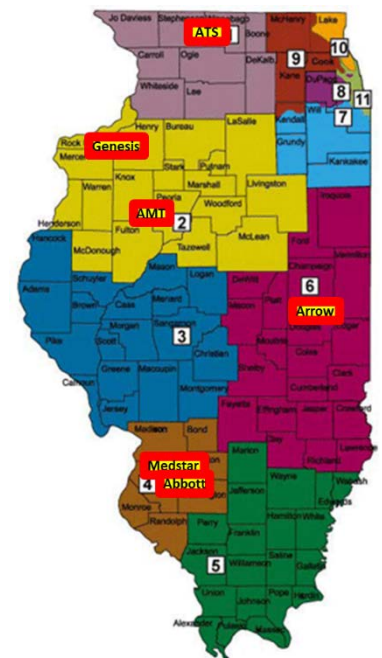
Growing the Illinois HID Transport System

Currently one of the biggest Highly Infectious Disease (HID) hurdles facing Illinois is an adequate system to relocate patients from one facility to another. Outside of Chicago, only six Illinois ambulance agencies are capable of transporting a HID patient. Time is extremely crucial when dealing with a patient of this caliber so six agencies is simply not enough. Statewide, our goal is *a minimum of two agencies per region* have this capacity.

Resources are available including Memorandums of Understanding (MOU), trainings, isopod equipment. If an Emergency Management System (EMS) is interested in meeting this need, contact Casey McCartney at casey.mccartney@carle.com.

These EMS agencies can currently transport a HID patient:

- ATS-Rockford
- Genesis-East Moline
- AMT-Peoria, Quad Cities
- Arrow-Champaign
- MedStar & Abbott-Belleville/Sparta



HID Dispatch

Do you have our number?

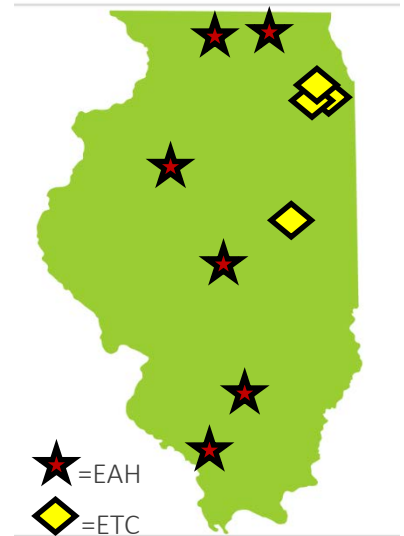
Over the past few years, the number of facilities equipped and trained to meet the needs of Ebola and other highly infectious diseases has shifted. Today, there are six Assessment Hospitals and four Treatment Centers. See the list of all current facilities prepared for Ebola in Illinois below.

Ebola Assessment Hospitals:

FHN Memorial Hospital-Freeport
Good Samaritan Regional Health Center-Mt. Vernon
OSF St. Francis Medical Center-Peoria
Rockford Memorial Hospital-Rockford
SIH Memorial Hospital-Carbondale
St. John's Hospital-Springfield

Ebola Treatment Centers:

Carle Foundation Hospital-Urbana
Lurie Children's Hospital-Chicago
Northwestern Memorial Hospital-Chicago
Rush University Medical Center-Chicago



Editor's Note: Welcome Casey McCartney, Highly Infectious Disease Program Specialist

I joined Carle in November 2017 to manage Illinois' Highly Infectious Disease Network. Working with Illinois Department of Public Health (IDPH) I will develop continuing education opportunities, create a system for patient care staff who volunteer for the HID team, build a network of funeral homes that will cremate deceased HID patients, and lead standardize statewide Assessment Hospital drills, trainings and education. I've already had the great pleasure of meeting staff across the State and I look forward to working with everyone in the future!



Casey brings a strong background in Public Health. As a graduate the University of IL Community Health Education, she worked for seven years with Champaign County Health Department focusing on West Nile virus research and HIV/AIDS counseling.

Fun Facts about Casey:

- I love gardening! I have a 1500 square foot garden and a 12-tree orchard and spend time there daily.
- I would love to travel to Ireland to experience their culture and explore my heritage.
- CU Insider tip: Farren's Pub and Eatery is the best place for a quick bite. "It's a hole in the wall, despite being underground, and has amazing food!"

Contact:

Casey McCartney, HID Program Specialist (IL), Carle Foundation Hospital
Office: 217-383-4963 Cell: 217-273-4121 Pager: 217-235-8248 casey.mccartney@carle.com