

Carle in the Community

A powerful impact.

Benefitting the community is central to everything we do at Carle, and our role within the community extends far beyond the walls of our hospitals and clinics. As the region's trusted healthcare provider, we are also called to be the region's trusted community partner - providing assistance, programs and resources when and where our communities need them. Our commitment to the community reflects our mission to serve by delivering high-quality care, conducting impactful medical research and training the providers and caregivers of tomorrow. Our vision to improve the health of the people we serve and our commitment to the communities we call home are stronger than ever.

DEFINING COMMUNITY BENEFIT

Community benefit has many components, including charitable activities of the not-for-profit Carle Foundation Hospital, Carle Physician Group and other Carle entities.


- 

Charity Care
Care that is provided at no cost to our patients, regardless of their ability to pay
- 

Charitable Donations and In-Kind Gifts
- 

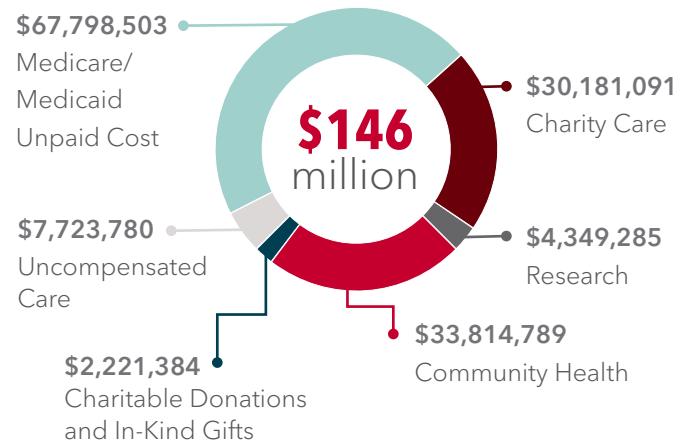
Community Health
Programming support within the community
- 

Medicare/Medicaid Unpaid Costs
Unreimbursed care provided to patients covered by Medicare and Medicaid
- 

Research
- 

Uncompensated Care
Care for which Carle received no payment

SERVICES, DONATIONS AND SUPPORT TO OUR COMMUNITIES



\$30.1 million in free or discounted care to our patients

33,000 +
Patients who received free or discounted care

100 +
Donations to community organizations

OUR COMMITMENT IN ACTION

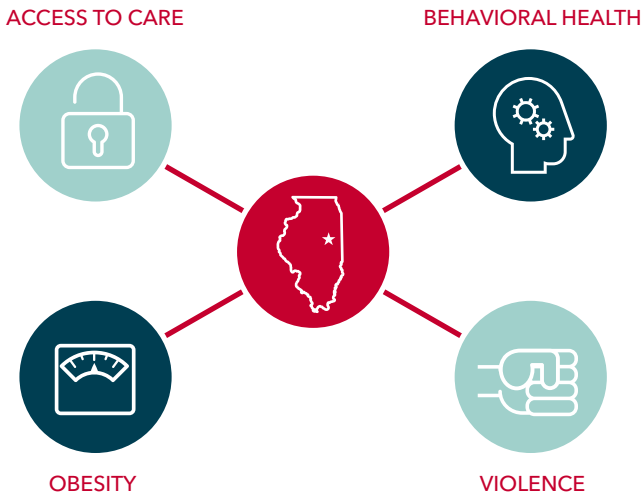
Carle is proud to partner with the Frances Nelson Health Center, operated by Promise Healthcare, our local Federally Qualified Health Center (FQHC). Working together, we are able to expand access to primary and preventive care, important health screenings and staff support.



OPERATING FRANCES NELSON AND SMILEHEALTHY

COMMUNITY BENEFIT FOCUS

As part of this commitment, we continually study the needs of the people and communities we serve. Working with industry peers and partners, we have identified four key health issues impacting our communities. Using this information, we developed a comprehensive plan to not only guide our efforts, but make the greatest difference in the health and wellness of our communities. The four key health issues most impacting our region are:



With the help of our great partners, our community programs are expanding healthcare services for the under- and uninsured, addressing the addiction epidemic in our region, encouraging healthy habits, and supporting victims of domestic violence, sexual assault and child abuse.

Our work does not stop here. Each of our communities is unique, and so too are their needs. Driven by our mission and vision, Carle is committed to going above and beyond to ensure patients and community members have access to the care and resources they need.

CHARITY CARE

As a strong community partner, Carle cares for people regardless of their ability to pay. We are committed to ensuring all our patients receive the care they need, while remaining responsible stewards of our resources. As healthcare evolves, regulations shift and reimbursements change, this is a mission to which we must remain vigilant in studying and fulfilling. While the number of people with health coverage has increased in Illinois, the amount of coverage individuals receive from their health plans has decreased, and many patients are unable to meet their portion of the financial obligation.

Year	Individuals who received free or discounted care	Charity care at cost	Annual community benefit
2016	33,335	\$30,181,091	\$146,088,832
2015	33,972	\$30,628,548	\$140,700,632
2014	31,608	\$38,948,569	\$118,801,368
2013	27,382	\$44,306,073	\$142,377,828
2012	25,593	\$35,183,681	\$153,255,326
2011	14,600	\$25,244,659	\$131,820,259

For more information, or to view an online version of this community benefit report, please visit carle.org/impact or email publicrelations@carle.com

