

# *New Beginnings*

2022 CHARITABLE GIVING ANNUAL REPORT



# *New Beginnings*



Every January, we all get the same fresh slate – the opportunity to travel new roads, try new things or perhaps do the things we’ve always done in a better way. And that’s what we’re doing with this year’s annual report.

We’ve eliminated the long lists of names and reduced the length of the articles, which allows us to highlight a greater number of the amazing things your gifts helped us achieve. Whether it’s our \$1 million commitment to sustainability or investments in new genetic research, generous gifts from nearly 2,600 donors will provide more than \$7.9 million to make healthcare even better for those who count on Carle.

Another subtle but important change is our name. In case you missed it, we’ve added the word "Health." Our new name, Carle Health Center for Philanthropy, acknowledges the growth of the Carle Health system and better reflects our organization. The reference

to health is much more descriptive of our purpose – enhancing the care Carle provides.

Of course, not everything has changed. At the heart of each story, you’ll still find the same elements – pride in our joint accomplishments, hope for the future and gratitude for the kind of world-class care that can only be created when we all work together to achieve greater things.

And so, as we turn the page on a brand-new year, we thank you for all that you helped us accomplish in the last year. And we renew our commitment to you to invest your future gifts into transformative care that will change countless lives for the better.

With gratitude,

A handwritten signature in black ink that reads "Beth Katsinas". The signature is fluid and cursive.

Beth Katsinas  
Vice President  
Carle Health Center for Philanthropy



# Annual Giving

We're incredibly grateful to the 2,533 annual donors who gave nearly \$1.3 million in financial support to transform healthcare in the communities we call home.

## Taking Healing to a Whole New Level

### GIFTS CREATE \$1.6 MILLION GARDEN IN THE SKY.

When Will's Garden opened in June, it was the culmination of a journey that began over 15 years earlier, when Will Tate experienced a rooftop garden at a hospital in St. Louis. "As soon as we opened the doors, it's like everything melted away," said Will's mom, Melissa. The garden provided a welcome escape from tests and needles for the young boy, who was diagnosed with leukemia at 13. And before his passing, he expressed a wish to see a similar garden at Carle Foundation Hospital in Urbana. Construction of the garden, located on the sixth floor of the hospital, was delayed for various reasons, including a global pandemic that brought normal hospital operations to a halt. But all of us, collectively, wouldn't rest until Will's wish became a reality. This year, it was finally completed, thanks to donations from Carle Health employees and physicians, Carle Golf Open sponsors and participants,



Will's Garden at Carle Foundation Hospital.

and many others. Will's Garden includes a pergola, three small trees and over 2,000 plantings. The garden uses ultra-light media that's lighter than typical soil to reduce weight on the roof, and features raised pots and pathways wide enough to accommodate patient beds, making it a welcoming place, accessible to all – a lasting legacy Will would have loved.

## A Million-Dollar Milestone

### WLC AWARDS ANNUAL GRANTS.

For more than a decade, the Women's Legacy Circle has been making extraordinary healthcare possible by funding projects that enhance patient care. It all started in 2009 when a handful of women created a unique giving circle that used its annual gifts to fund employee-driven initiatives that don't always find a place in the departmental budget. Whether it's sponsoring educational outreach or purchasing the equipment needed to get an exciting new program off the ground, the Women's Legacy Circle empowers our employees to

# WLC

WOMEN'S LEGACY CIRCLE

go above and beyond. It's a very personal form of giving that goes beyond simply writing a check. Every year, members gather to hear passionate presentations from several Carle employees, then decide which projects they'd like to fund. In 2022, the circle awarded more than \$99,000 in grants to support 16 different projects – and in doing so, they achieved a major milestone, marking \$1 million in total contributions. We're extremely grateful for this amazing group of committed philanthropists and all they do to enhance our mission of care.

## Giving Where It Matters Most

### IGIVE RAISES NEARLY \$450,000 FOR LOCAL HOSPITALS' GREATEST NEEDS.

Since 2003, the annual iGIVE employee giving campaign has raised more than \$6 million to support a wide range of high-impact patient care initiatives, including Will's Garden, the Mobile Health Clinic and Critical Care Transport. But this year, the campaign went in a bold new direction – with a renewed focus on local. "In the past, we've rallied Carle Health team members around specific projects," said Sharla Jolly, director of leadership giving for Carle Health Center for Philanthropy. But in 2022, employees were encouraged to make their annual gift to the Greatest Needs Fund at the hospital of their choice, providing unrestricted funds to each Carle Health facility – money that can be used however it's needed most. More than 1,400 team members responded, raising nearly \$450,000 for patient care. In the last year,



New orthopedic surgery equipment at Carle Eureka Hospital.

gifts to the Greatest Needs Funds made a tremendous impact locally – for example, bringing orthopedic surgeries back to Carle Eureka Hospital, purchasing an advanced breast-imaging machine for Carle Foundation Hospital in Urbana and acquiring a lifesaving chest compression machine for the emergency department at Carle Richland Memorial Hospital.

## Caring Locally, Thinking Globally

### CARLE HEALTH CENTER FOR PHILANTHROPY COMMITS \$1 MILLION TO SUSTAINABILITY EFFORTS.

Every year, healthcare organizations spend more than \$6.5 billion on energy, using 2.5 times more energy per square foot than a typical office building. To be good stewards of the resources entrusted to us, Carle Health Center for Philanthropy recently committed \$1 million to support sustainability efforts throughout our organization. This commitment, which will provide the dollars needed to build processes and systems that make measurable change, is fully funded with gifts made by our donors to the Greatest Needs Funds at facilities throughout the entire system. Already, Carle Health has made significant strides in sustainability,



working with Ameren to achieve \$1 million in energy saving initiatives. And with this commitment, we'll do even more, funding a sustainability and energy manager position for two years and providing seed money for high-impact projects related to education and advocacy, water and energy conservation, and various waste reduction initiatives.



# Corporate Giving

Thanks to hundreds of corporate partners, local Carle hospitals, programs and services benefitted from more than \$600,000 in corporate support.

## Oh Baby, What a Night!

**DERBY RAISES \$185,000 FOR CARLE BROMENN MOTHER BABY UNIT.**



"A Taste of Derby: Fashionably Neat" raised more than \$185,000.

In April, two dozen amazing businesses came together to host a derby night benefiting local mothers and their babies. "A Taste of Derby: Fashionably Neat" promised fashion, fun and southern hospitality for the 225 guests who gathered to raise funds for the Mother Baby Unit at Carle BroMenn Medical Center. And it didn't disappoint. The inaugural event included a raffle, auction and one-of-a-kind fashion show with Carle clinicians and volunteers modeling the latest styles from the Carle BroMenn Resale Boutique. The evening was designed to help the Mother Baby Unit reach gold status in the Safe Sleep Hospital Certification Program, which is the highest level of achievement in the program. The event was a smashing success, raising more than \$185,000 to fund the distribution of sleep sacks and safe newborn beds, education and resources for parents, and additional training opportunities for staff. We're so grateful to our premier sponsors – Burwood Group Inc., Integrity Technology Solutions and Afni– and all the other amazing corporate partners and attendees who came together to make the evening so successful.

## Banking on the Next Generation

**PNC BANK AWARDS CARLE WITH \$25,000 GRANT.**

Learning starts well before children officially enter the classroom. According to research, 90% of a child's brain development happens by age 5, making early education key to a successful life. In 2004, PNC Bank started Grow Up Great®, a multimillion-dollar initiative to champion early childhood education by supporting teachers, caregivers and others serving the education needs of children under 5. And for the third year in a

row, they've awarded the Community Health Initiatives Early Childhood team at Carle a \$25,000 grant to support their work. The Early Childhood team seeks to expand educational equity and kindergarten readiness across Champaign County by providing educational program development that includes early childhood education, as well as family educational programming. The program is hands-on and highly customized, with team members assessing the needs of each child and supporting their development through an educational plan that's tailored for each family. The team is very grateful for the grant, which will help cover the cost of family programming, supplies, screenings, curriculum materials and quarterly family engagement events designed to help make parents active partners in their child's learning journey.



The 2022 Carle Golf Open raised more than \$418,000 to support Community Health Initiatives at Carle.

## Making a Healthier Community Par for the Course

**CARLE GOLF OPEN RAISES \$418,000 FOR SIX SERVICES THAT REACH BEYOND OUR WALLS.**

In every community, there are families who lack access to care, nutrition and the basic tools to build a better life. But in 2022, the Carle Golf Open did its best to change that. It was a record year for the annual event, which brought nearly 360 golfers together to raise more than \$418,000 to support Community Health

Initiatives at Carle. With the generous financial support of 83 corporate sponsors, including Hall Render Killian Heath & Lyman as our title sponsor, we raised funds that will help us reach beyond the walls to bring improved health and hope to families throughout our Champaign-Urbana service area. Six different services benefitted from the event, including our Mobile Health Clinic, Mobile Market, Center for Rural Health and Farm Safety, Faith Community Health, Healthy Beginnings and Family Foundations. Together, these services make a major impact on families most in need, bringing vaccines and other basic care to those who lack personal transportation, improving access to healthy food, and giving new moms and their babies a better start in life. Many thanks to all who helped us swing for the stars. With the tremendous impact you made, it was a day of golf where you all were true winners.





A student volunteer plays piano at the North Star Café.

## Sharing the Gift of Song

### NEW VOLUNTEER PROGRAM IS MUSIC TO PATIENTS' EARS.

We all know music makes our hearts merry – but recent science shows that it does more than simply lift our spirits. Listening to music can improve blood flow, lower blood pressure, and help surgical patients feel less pain and anxiety. You don't have to explain any of that to Dena Vermette – because she already knows. “Music is medicine,” said the well-known local jazz singer. “There's no doubt in my mind.” That's why Dena and her husband Jim helped fund the purchase of a digital piano for the new Creative Arts Music Program, which is bringing the healing power of music to patients at Carle. The program, created by Volunteer Services at Carle Foundation Hospital, provides an opportunity for local singers and musicians to share the gift of song with patients. Audrey Vallance, a Carle volunteer, schedules performances at venues throughout Carle Foundation Hospital, including Carle Cancer Institute and the North Star Café. It's healing and hope, in literal harmony.

## Inspiring and Educating Young Volunteers

### CARLE RICHLAND WELCOMES STUDENT RECRUITS.

In 2022, a new summer volunteer program at Carle Richland Memorial Hospital gave students a chance to both serve others and learn valuable information for future careers. “I've gotten an in-depth view of how healthcare works,” said Genevieve Carey, who was one of the first students to participate. The new

program gives high school and college students who are interested in healthcare careers an up-close look at the job. Carey and her fellow volunteers logged nearly 200 hours assisting with light duties across the hospital, from the emergency department to the medical-surgical units. Whether they were escorting patients or helping in the gift shop, they experienced daily life in the hospital, working alongside healthcare professionals as an integral part of the team. All the students were grateful for the opportunity, and some even expressed an interest to return next year when the hospital hopes to expand the program. And as the program grows, so too will the budding careers of our community's youth and young adults.

## Banner Year at Carle BroMenn Resale Boutique

### “REBO” RAISES \$240,000 FOR HOSPITAL OR.

For more than 70 years, the Carle BroMenn Resale Boutique has funded the philanthropic work of the hospital's Auxiliary. But this year was one for the records, thanks to the volunteers, staff and 15,000 individuals who kept the store well stocked with a wide array of furniture, housewares and other items. Three of the store's annual events – Bloom in June,

Jingle Jam and the Service Auxiliary Holiday Brunch – crushed the boutique's totals from last year, and November marked the store's biggest month ever, setting records for both the best month and best one-day sales total. The previous monthly record was set in December 2021, when the store raked in \$75,300. But in November, they zoomed past that, earning \$89,150. All total, the boutique grossed \$743,587 in 2022, which will soon make its way into projects that enhance patient care. In April, the Carle BroMenn Service Auxiliary put the proceeds from 2021 to work in the operating room, contributing \$240,000 to buy a new surgical monitor system and portable C-arm X-ray machine that provides amazing image quality while limiting the need to move patients. With the record funds raised in 2022, we can't wait to see what the Auxiliary will do next.

Volunteers presented a check to Carle BroMenn Medical Center for \$240,000.





## A Place for Everyone

### INITIATIVE CREATES WELCOMING ENVIRONMENTS.

On the surface, they couldn't be more different. The Cathy H. Nottoli Lobby at Carle BroMenn Medical Center is a large, open space designed to host an endless stream of patients, while the Joe Eisenmenger Sensory Room at Carle Foundation Hospital is small and cozy. But both of these newly dedicated spaces share the same mission –making Carle a place that's welcoming to all. The new lobby, located on the lower level of the Carle BroMenn Atrium, celebrates the legacy of Cathy Nottoli, who served as a dedicated physician recruiter for 20 years. It's a vibrant public space, meant to be open and welcoming. But for our patients with autism and other hypersensitivity issues, smaller and quieter spaces are more comfortable. That's why Carle Health also launched a bold initiative in 2020 to create spaces designed around the unique needs of this patient group. As the parents of a child with autism, Rich and Karen Eisenmenger, MD, were among those who championed this initiative, offering their passion, insights and financial support. The Joe Eisenmenger Sensory Room, located in the emergency department at Carle Foundation Hospital, is named for their son – and honors their efforts to create facilities truly welcoming to all who count on Carle to deliver world-class care.



## Closing the Gap

### LARGE GIFT SUPPORTS RARE GENETIC RESEARCH AT CARLE.

If you've never heard of Ehlers-Danlos syndrome (EDS), consider yourself lucky. It's a group of inherited disorders that affect connective tissue, making joints overly stretchy and skin so elastic that it's not strong enough to hold a medical stitch. Vascular versions of this rare condition can even cause the uterus to

rupture, creating potentially serious complications during pregnancy. Thankfully, the root cause of many EDS disorders has been discovered, but one – hypermobile EDS – remains elusive. That could change, however, thanks to a recent \$500,000 anonymous gift to Stephens Family Clinical Research Institute. Named in honor of the Carle physician and clinical investigator spearheading research on this rare condition, the Dr. Christina Laukaitis EDS Research Fund at Carle Health Center for Philanthropy will help cover the cost of a research analyst, equipment, software and other tools needed in this important quest.

## Putting Money Where His Heart Is

### OLNEY CARDIOLOGIST DR. FISHER PLEDGES ANNUAL \$10,000 GIFT.

It's only been four short years since Raymond Fisher, MD, joined Carle Richland Heart and Vascular Institute as a cardiologist, bringing nearly 50 years of medical experience to the team. "I was sent to Olney by Carle Health to fill a local need for specialized care and was graciously accepted by the hospital's administrators, employees and staff members," said Dr. Fisher, who currently serves as both a board member and vice

president of the medical staff. For the past two years, he's supported medical excellence in his adopted community with a \$10,000 pledge to the hospital's Greatest Needs Fund. And the grateful physician says he hopes to make that an annual tradition. "I feel that philanthropy is my way of showing my appreciation for that trust and recognition, and an opportunity to give back." We're so thankful for this heart doctor, who has always put his incredible talents and generosity where his heart is.



Raymond Fisher, MD

## Going Where the Need Is Greatest

### NEW MOBILE HEALTH CLINIC COMING TO MCLEAN COUNTY.

For families without a car, there's no such thing as a quick trip to the doctor's office. One appointment could mean multiple bus stops – and possibly a day off work, which could spell disaster for those in a tight spot. Since 2018, the Carle Mobile Health Clinic has helped change that, bringing assessments, screenings, vaccines and other medical necessities to communities throughout Champaign County and beyond. And now, it's being joined by a brand-new Mobile Health Clinic that will serve a nearby county. In 2022, the Tinervin Family Foundation, United Way of McLean County and the City of Bloomington each contributed \$150,000 to help purchase a new clinic for McLean County along with help from the Town of Normal, McLean County and Laborers International Union of North America, who each generously donated \$100,000. Their generosity helped fund a new, 40-foot mobile clinic that will begin serving Bloomington-Normal area families this spring.



A new mobile clinic will improve healthcare access for families.





Individuals who made or have confirmed plans to make a gift to Carle through their estate are members of the Margaret Carle Morris Society. Members give through various methods including bequests, charitable gift annuities, charitable trusts, gifts of real estate and gifts of life insurance.

## Gathering Together for Education and Action

### FUND UNITES A COMMUNITY TO STOP CHILD ABUSE.

When Kathleen Buetow, MD, joined the Pediatrics department at Carle in 1965, child abuse wasn't really acknowledged. For the next 55 years, she worked to change that, becoming a pioneer in the field. The more she learned, however, the more she realized it wasn't a simple issue. "The problem with child abuse is that it's not strictly a medical issue," Dr. Buetow said. "It's also not just a legal issue, or a social issue or a law enforcement issue.

It requires all of those disciplines working together." That's why she recently redirected and renamed a fund that she and her late husband created in memory of their son to help create a new annual symposium that addresses these vital issues. The first Buetow Family Child Maltreatment and Health Disparities Symposium, held in July, focused on distress tolerance and the mental health crisis caused by the recent pandemic. The event was designed to support healthcare professionals, educators, school administrators, coaches and parents on the front lines of that struggle. In addition to the new symposium, the Buetow Family Memorial Fund provides annual funding for a Carle pediatrician to attend training in child abuse. In 2022, Dr. Buetow confirmed a future estate gift will be added to this fund, supporting its important work for generations to come.

## How Suite It Is

### HUFFMAN GIFT CREATES MEMORY CARE SUITES AT THE WINDSOR OF SAVOY.

For years, Merrill Huffman, MD, and his wife Barbara were a fixture at Carle. Over four decades, Merrill worked as an obstetrician-gynecologist while Barbara was a life member of the Carle Foundation Hospital Auxiliary. Throughout their lives, the two enjoyed an amazing partnership. So, when Barbara passed in 2016 after many years of living with Parkinson's

disease, Dr. Huffman established the Barbara and Merrill Huffman Memory Care Fund at Carle Health Center for Philanthropy to help Carle care for those with Alzheimer's disease and other cognitive health issues. That gift, made shortly before his passing in 2019, recently transformed nine existing apartments at The Windsor of Savoy into the Barbara and Merrill Huffman Memory Care Suites. The new suites officially opened in April, offering specialized nursing and caregiving, with staff on-hand around the clock to help those with cognitive needs. Their generous estate gift upgraded interior finishes, improved lighting and made other enhancements to the resident experience.

## Sowing the Seeds of Hope

### FARM SALE PROVIDES \$1.1 MILLION FOR THE GREATEST NEEDS.

Sometimes the hardest part of estate planning is choosing the right beneficiary. In a large hospital, there could be a dozen amazing programs competing for financial support. So how do you pick? Giving to the Greatest Needs Fund provides the answer to that dilemma, allowing administrators to steer philanthropic donations wherever they're needed most – whether that's the purchase of a lifesaving piece of equipment, funds for a new building or the resources to weather an unexpected pandemic. That's what Bonnie Humphrey chose to do. In appreciation for the care that she and her family received throughout her life, she named Carle BroMenn Medical Center as a



beneficiary of her will. Bonnie asked that the family's farm in Lincoln, IL, be sold after her passing, with the proceeds benefiting the Greatest Needs Fund. Her request resulted in a \$1.1 million gift that will have a tremendous impact, enhancing patient care at the hospital for many years to come.

## Giving from the Heart

### THE CAROLINE R. BROWN LIVING TRUST HELPS CARLE RAISE THE BAR.

For over 25 years, Caroline Brown was a secretary at First Baptist Church in Danville, IL. The longtime Catlin, IL, resident was also a grateful Carle patient.

So when she passed away in 2021, she made a generous donation to Carle, providing \$500,000 through her living trust to be split between Carle Heart and Vascular Institute and Carle Cancer Institute. Her generous gift will be used to help both institutions raise the bar, providing world-class care to patients in their greatest time of need.

## A Lasting Impact from a Longtime Auxilian

### THE LIBBIE LORE CHARITABLE REMAINDER TRUST CREATES A LEGACY OF GIVING.

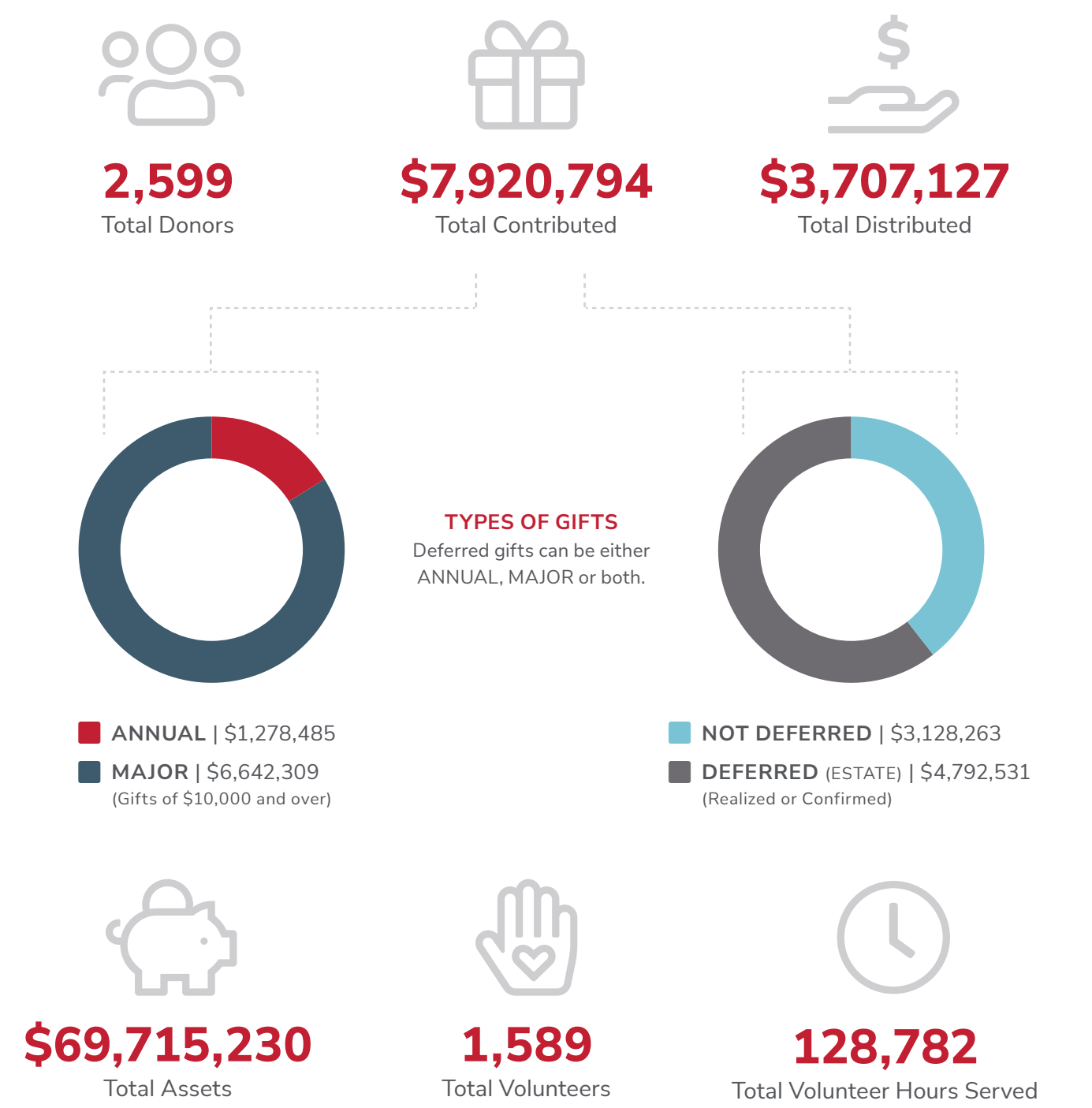
For years, the Carle Foundation Hospital Auxiliary has been a generous partner in our mission of care, providing volunteer services and generous philanthropic gifts that have literally transformed the local healthcare landscape. And Libbie Lore was there when the

Auxiliary got its start. Lore was both a founding and life member of the organization, serving as its eighth president in 1966. She was linked to the hospital's work through her husband, Harry E. Lore, MD, who served as an ENT doctor at Carle Clinic until his passing in 1968. Their son, Thomas, fondly recalls the time he and his siblings spent at the clinic with him on his Saturday hospital rounds. In 2016, Libbie moved to Texas, and it was there she passed, just shy of the century mark. In her passing, she celebrated their time at Carle, providing a gift of more than \$50,000 to the Greatest Needs Fund. We're grateful for this generous gift from one of the oldest members of the Carle extended family.

# Charitable Giving

January 1 – December 31, 2022

Thanks to donors like you, Carle Health Center for Philanthropy continues its commitment to enhance the world-class healthcare Carle provides. The financial health of our charitable organization remained strong in 2022. We're excited – and honored – to partner with you as we transform healthcare in our communities through giving and volunteering.



## GIVING BY COMMUNITY

With many locations in our healthcare system, we know that where and how you give back is important. That's why we offer opportunities to support your local hospital and community. As a not-for-profit organization, Carle Health relies on charitable gifts to make the compassionate, world-class care we're known for a reality for the families who depend on us. Unrestricted gifts made to the Greatest Needs Fund at your local Carle hospital allow our team to determine how your gift is best used to make the greatest impact. The table below looks at unrestricted giving as well as restricted giving designated to established funds at Carle Health Center for Philanthropy. We're so incredibly grateful.

SUPPORT TYPE	Bloomington-Normal Carle BroMenn Medical Center Carle Eureka Hospital	Champaign-Urbana Carle Foundation Hospital Carle Hoopeston Regional Health Center	Olney Carle Richland Memorial Hospital
Unrestricted Support	\$1,973,815.35	\$199,852.26	\$25,467.59
Restricted Support	\$840,791.01	\$4,703,779.32	\$58,509.85
TOTAL	\$2,814,606.36	\$4,903,631.58	\$83,977.44

\*\$118,579 benefited funds that support all communities.



## GIVING THAT GROWS

An endowment is a long-term source of funding for Carle and can be created through an outright gift, a bequest in a will, or a life income gift such as a charitable gift annuity or a charitable remainder trust. There are 53 active endowments at Carle, and each one plays a vital role in our mission – funding groundbreaking research, continuing education and other important investments in care. Together, these endowments totaled \$9,660,671 at the end of 2022. While the main core of the endowment is never spent, the interest generated provides funding for donor-designated purposes throughout Carle Health. It's generosity that grows – so our excellence can too.



GIVING TIME AND TALENT

Carle Health relies on volunteers to enhance the healthcare experience for those we serve. These individuals – 1,589 to be exact – give back through their time and talent. In 2022, they gave 128,782 hours of service to Carle Health. When you calculate these hours at our state’s minimum wage (\$12 per hour), this equals a donation of \$1,545,384. When you look at it from the National Independent Sector Rate for volunteers (\$29.95 per hour), this equals \$3,857,021. To say we’re grateful is an understatement. We’re honored to have such loyal and dedicated volunteers serving our patients and staff.

SERVICE AREA	HOURS SERVED	TOTAL VOLUNTEERS
<b>Bloomington-Normal</b> Carle BroMenn Medical Center Carle Eureka Hospital	57,248	528
<b>Champaign-Urbana</b> Carle Foundation Hospital	64,493	1,000
<b>Olney</b> Carle Richland Memorial Hospital	7,041	61



2022 Carle Health Center for Philanthropy Board of Trustees

Mary McGrath, Chair	Phillip Blankenburg	James Leonard, MD	Will Timmons
Curt Anderson	Julia Eichhorst	Malec Mokraoui, MD	Paul Tucker, PhD
Karl Appelquist	Donna Greene	Wael Mostafa, MD	Shirley Witte
Kathy Aquino	Justin Kirby	Scott Reichard	
Joseph Barkmeier, MD	Bud Leister	Rick Stephens	

2022 Regional Philanthropy Councils

Central Illinois  
(Carle BroMenn Medical Center, Carle Cancer Institute Normal, Carle Eureka Hospital)

Amanda Jarvis, EdD, Chair	Andrea Kane , MD	Catherine Porter	Courtney Zell
Mary Bennett Henrichs	Matt Nicolas	Jerry Ringer, MD	
Nate Hinch	J. Phillips	Krupal Swami	

Southern Illinois  
(Carle Richland Memorial Hospital)

Julia Eichhorst, Chair	Janet Hewerdine
Debi Phillips	Mark Richardson
Diane Buss	







*Thank you for all you've  
made possible in 2022.*